



SAN JOSE DATA CENTER

@6580 VIA DEL ORO

KEY ATTRIBUTES

- ✔ **Connectivity --**
Multiple on-site carriers
- ✔ **Efficiency --**
PUE <1.25, near-zero WUE
- ✔ **Speed --**
4 MW commissioned and available; 6 MW within 12 months

CRITICAL POWER

10^{MW}

BUILDING SIZE

80,000^{SF}





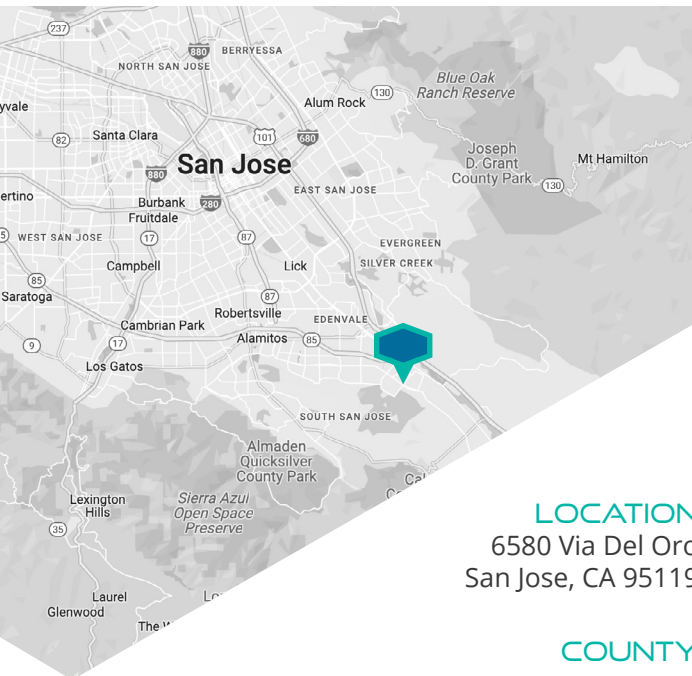
WELCOME TO PRIME SAN JOSE

OVERVIEW OF PRIME'S 6580 VIA DEL ORO DATA CENTER

WHY SAN JOSE? | The San Jose data center market is a key part of the Silicon Valley region, the third-fastest growing in the US since 2015. Home to some of the largest tech companies in the world, Norcal boasts large, interconnection ecosystems that route data to and from the US and APAC.

WHY PRIME IN SAN JOSE? | Connectivity - Sustainability - Speed to Market

Why wait for data center power? Prime San Jose has 10 MW confirmed with 4 MW of move-in ready capacity. Support your ESG commitments with access to 100% renewable power, <1.25 annualized PUE, and near-zero WUE thanks to Prime's closed-loop cooling system. Plus, enjoy easy dark fiber connectivity to regional IXPs.



LOCATION
6580 Via Del Oro
San Jose, CA 95119

COUNTY
San Jose County

CAMPUS SIZE
5 acres

CAMPUS & FACILITY

- Campus size: 5 acres
- 10 MW critical power
- 80,000 SF, single-story building
- Completed, purpose-built facility
- Seismic importance factor of 1.5

POWER DESIGN

- Concurrently maintainable power
- PG&E utility provider
- Adjacent to substation
- N+1 UPS / generators

COOLING DESIGN

- Concurrently maintainable cooling
- N+1 cooling system
- Power densities up to 18 kW per rack

SUSTAINABILITY

- <1.25 annualized PUE
- Closed-loop cooling: near-zero WUE
- Air-side economization
- Access to 100% renewable energy

SECURITY & COMPLIANCE

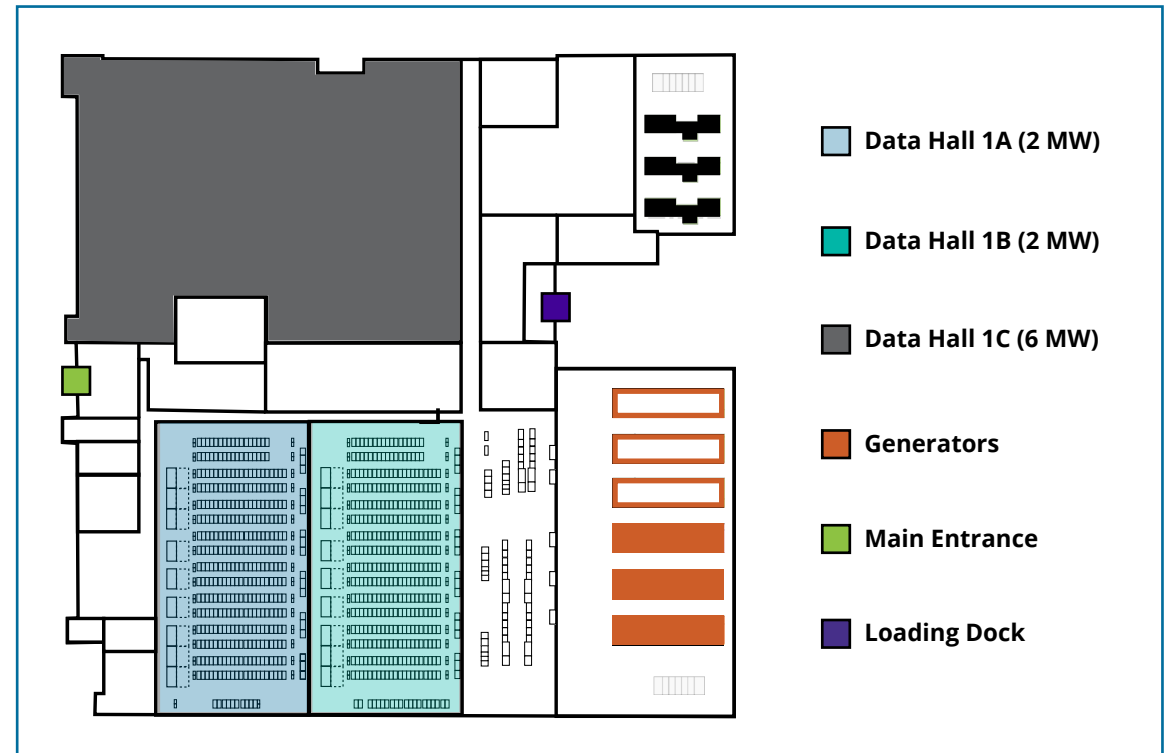
- SOC 2 Type II, ISO 27001*
- Biometric / Keycard access controls
- Mantraps with anti-tailgating
- 24x7x365 monitoring, officers, CCTV

CONNECTIVITY

- Multiple on-site carriers available
- Access low-cost, wholesale fiber pairs
- Low-latency access to regional IXPs

*Compliance projected based on standard, Prime design.

SAMPLE FLOOR LAYOUT



3 REASONS TO CHOOSE PRIME

- ✔ Data centers on your terms
- ✔ Partners in risk mitigation
- ✔ Nimble operations for predictable results

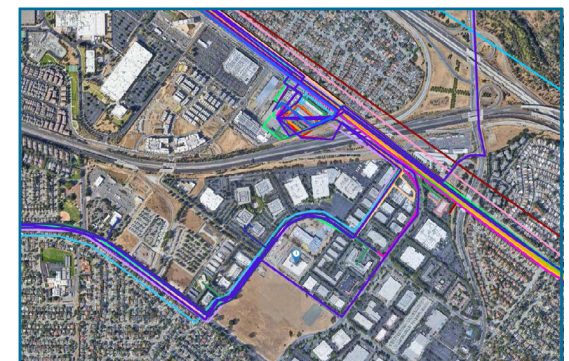


SOC 2 TYPE II
COMPLIANT

CAMPUS CONNECTIVITY

NETWORK ACCESS

- Access to wholesale, dark fiber pairs from multiple providers
- Low-latency access to regional IXPs
- 15 carriers in proximity to campus
- 100+ carriers, cables accessible in SV



ABOUT PRIME

Prime is an international provider of hyperscale and wholesale data centers. Data-driven organizations such as cloud providers, Internet businesses, and the Global Fortune 500 choose Prime for build-to-suit, powered-shell, and Prime-design data centers that help them advance, defend, and achieve their technology and sustainability objectives. Prime differentiates with risk mitigation, nimble operations for predictable results, and data centers delivered on customer terms such as unique ownership options and dynamic lease structures. At the company's core, Prime's mission is to be the go-to infrastructure solutions partner for its customer base. With a roadmap of more than two gigawatts of critical power capacity spread across established and emerging markets, Prime will be where they need to grow next. *Prime | Data Driven.*

The contents of this document are confidential Prime Data Centers is a registered trademark of Prime Data Centers, LLC. All rights reserved.
2024 © Prime Data Centers.

TAKE THE NEXT STEP

- ▶ [TOUR THE DATA CENTER](#)
- ▶ [SCHEDULE A DISCOVERY CALL](#)
- ▶ [VISIT OUR WEBSITE](#)

